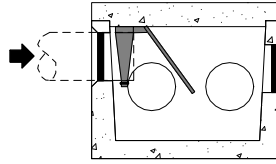
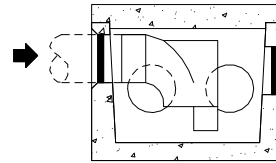


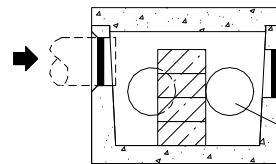
**Inlet Baffle Options: (installed by contractor on site)**



1. Use a plastic baffle attached to the inlet pipe. Woodard's model FGD.

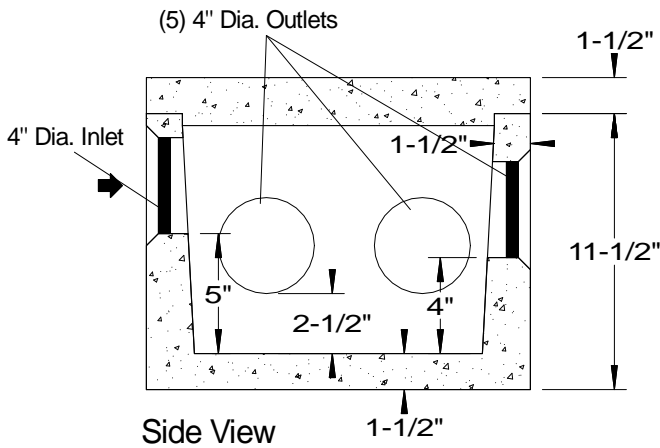


2. Use a sanitary tee with the top cut for a 1" vent space and the inlet half of the bottom cut out.

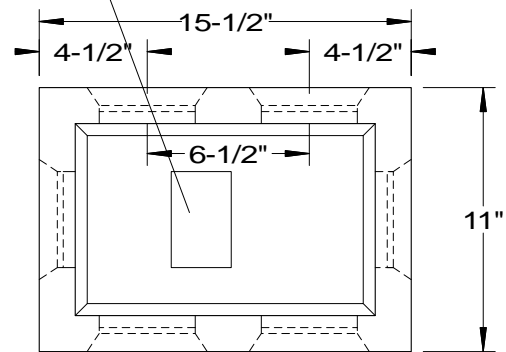


3. Brick and mortar a baffle in the center, 4" from the inlet end.

**Note:** For all options, use the side outlet farthest away from the inlet.



Inlet Baffle required, see options above



<b>SPECIFICATIONS</b>	
<p>Concrete Min. Strength: 4,000 psi at 28 days            Reinforcement: Fiber            Air Entrainment: 5%            Pipe Connection: Polylok Seal (patented)            Load Rating: 300 psf            Weight = 75 lbs</p>	<p style="text-align: center;"><b>PRECAST DISTRIBUTION BOXES            MODEL DB-6DB / 5 OUTLET DROP BOX</b></p> <p style="text-align: center;"><b>Woodard's Concrete Products, Inc.</b>            629 Lybolt Road, Bullville, NY 10915            (845) 361-3471 / Fax 361-1050</p> <p style="text-align: center;">Page 2B 1/5/05</p>